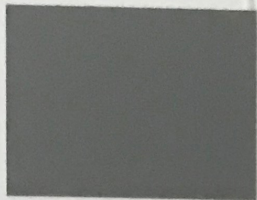


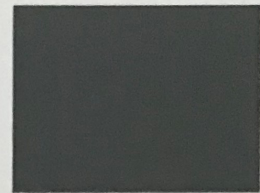
Grey
1 bag per 2 meters



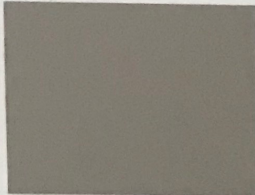
Grey
1 bag per 1 meter



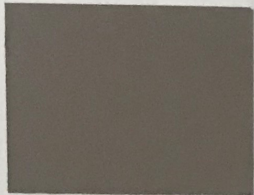
Grey
2 bags per 1 meter



Grey
3 bags per 1 meter



Mauve
1 bag per 2 meters



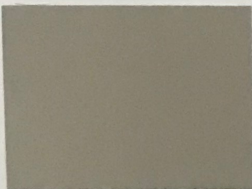
Mauve
1 bag per 1 meter



Mauve
2 bags per 1 meter



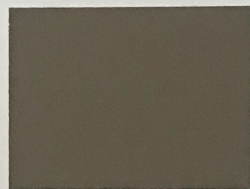
Mauve
3 bags per 1 meter



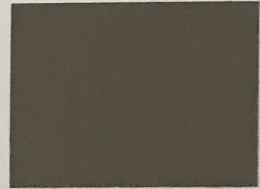
Earth Brown
1 bag per 2 meters



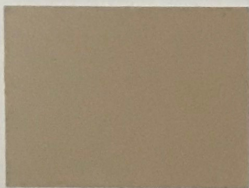
Earth Brown
1 bag per 1 meter



Earth Brown
2 bags per 1 meter



Earth Brown
3 bags per 1 meter



Santa Fe
1 bag per 2 meters



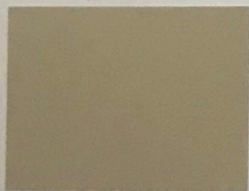
Santa Fe
1 bag per 1 meter



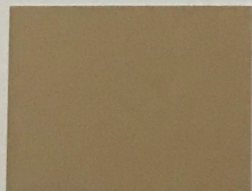
Santa Fe
2 bags per 1 meter



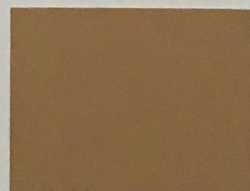
Santa Fe
3 bags per 1 meter



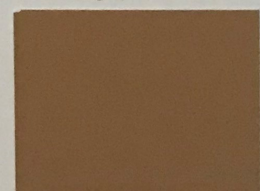
Honey
1 bag per 2 meters



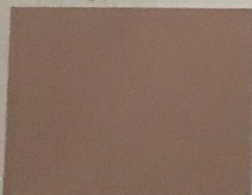
Honey
1 bag per 1 meter



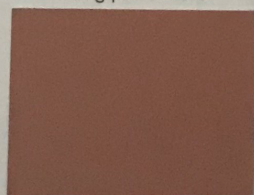
Honey
2 bags per 1 meter



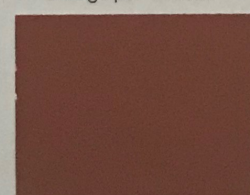
Honey
3 bags per 1 meter



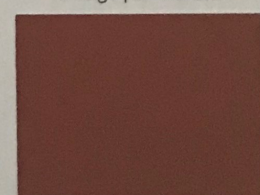
Canyon Clay
1 bag per 2 meters



Canyon Clay
1 bag per 1 meter



Canyon Clay
2 bags per 1 meter



Canyon Clay
3 bags per 1 meter

Warranty/Disclaimer

Because the conditions of use and application of our products are beyond our control, Vieira Concrete Supply makes no warranty of fitness or merchantability for any particular purpose and expressly disclaims liability for incidental or consequential damages whether based on negligence or warranty. Buyer's sole remedy shall be the refund of Colour purchase price from point of purchase.

To obtain the best results use low water to cement ratio (less than 4" slump). Higher water to cement ratio will result in washed out colour. DO NOT vary water to cement ratio when using colour. DO NOT use chloride admixtures. DO NOT add water to surface or tools while finishing. Always seal coloured concrete surfaces. Colour selections on this chart are approximated as closely as possible to the appearance of colour when used on horizontal troweled and/or imprinted surfaces. Variations can be expected due to job conditions, cement finishing techniques, use of sealers and slight raw material colour drifts. Due to the natural source materials in cement and handcrafted nature of imprinted concrete, variations are acceptable and desirable. See Vieira Technical Bulletin before use.